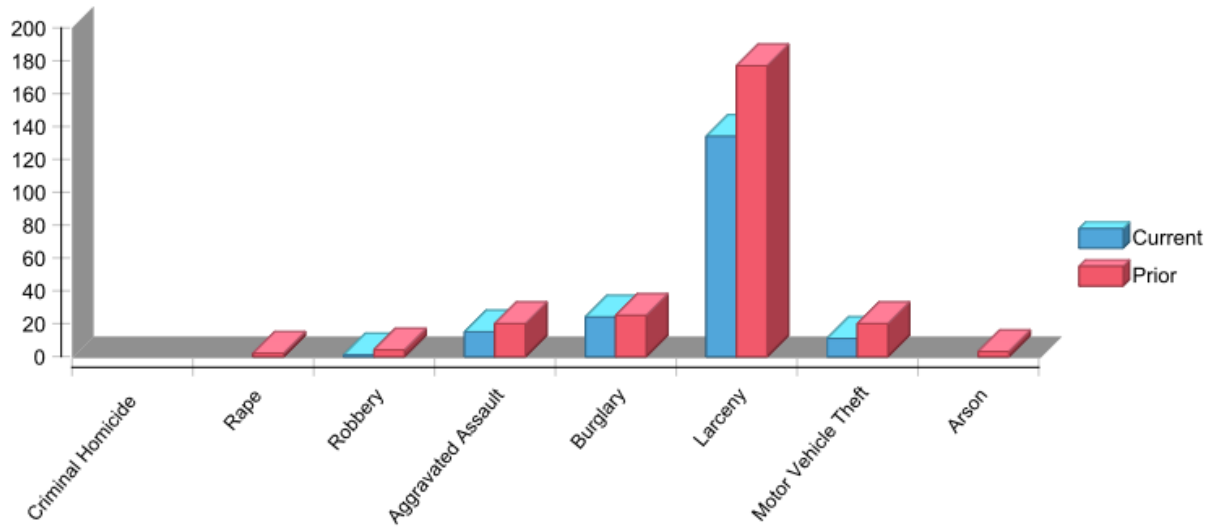


Selected Criteria					
Date:	Dec 31, 2018	Period:	365	Tab:	Part1

Property Crimes CYTD: -24.89%

Violent Crimes CYTD: -38.46%

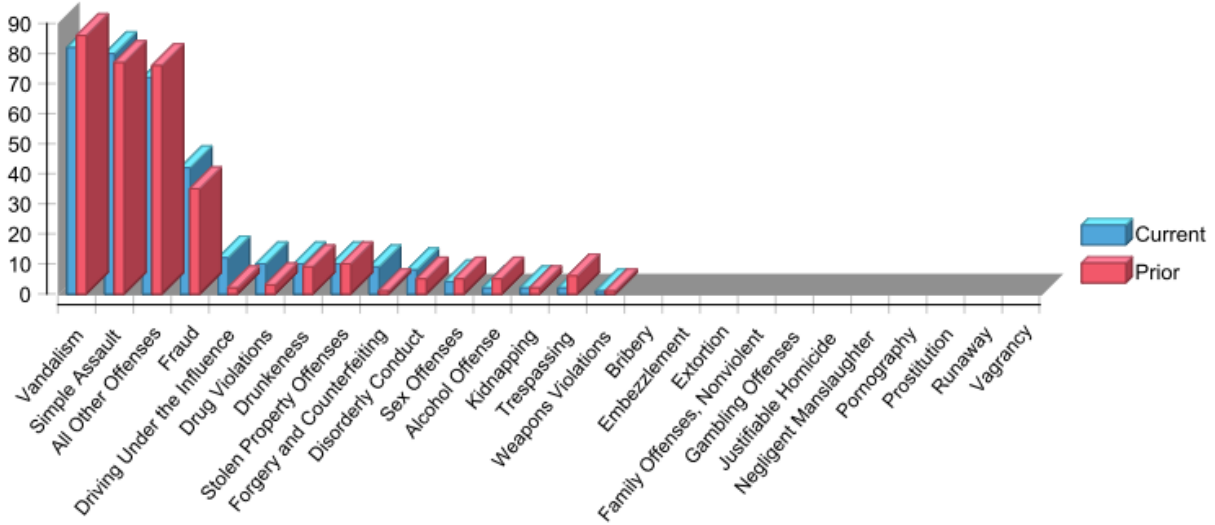
### Part 1 Incidents



	Current	Prior	Delta	% Change	CYTD	PYTD	YTD Delta	% Change YTD
Criminal Homicide	0	0	0	0.00%	0	0	0	0.00%
Rape	0	2	-2	-100.00%	0	2	-2	-100.00%
Robbery	1	4	-3	-75.00%	1	4	-3	-75.00%
Aggravated Assault	15	20	-5	-25.00%	15	20	-5	-25.00%
Burglary	24	25	-1	-4.00%	24	25	-1	-4.00%
Larceny	134	177	-43	-24.29%	134	177	-43	-24.29%
Motor Vehicle Theft	11	20	-9	-45.00%	11	20	-9	-45.00%
Arson	0	3	-3	-100.00%	0	3	-3	-100.00%
<b>Grand Total</b>	<b>185</b>	<b>251</b>	<b>-66</b>	<b>-26.29%</b>	<b>185</b>	<b>251</b>	<b>-66</b>	<b>-26.29%</b>

Selected Criteria					
Date:	Dec 31, 2018	Period:	365	Tab:	Part2

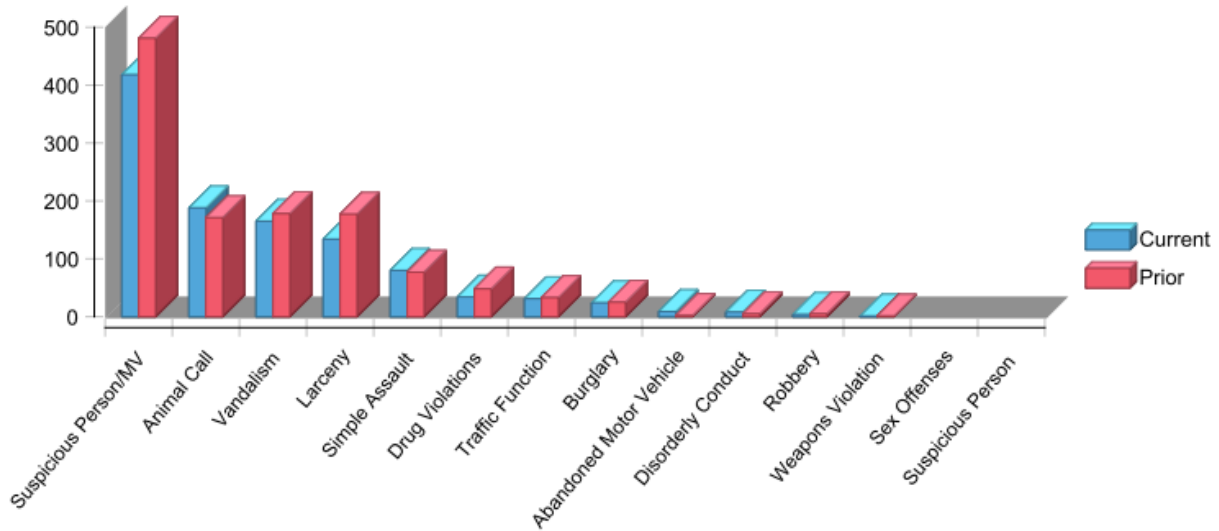
### Part 2 Incidents



	Current	Prior	Delta	% Change	CYTD	PYTD	YTD Delta	% Change YTD
Vandalism	82	86	-4	-4.65%	82	86	-4	-4.65%
Simple Assault	80	77	3	3.90%	80	77	3	3.90%
All Other Offenses	72	76	-4	-5.26%	72	76	-4	-5.26%
Fraud	42	35	7	20.00%	42	35	7	20.00%
Driving Under the Influence	12	2	10	500.00%	12	2	10	500.00%
Drug Violations	10	3	7	233.33%	10	3	7	233.33%
Drunkenness	10	9	1	11.11%	10	9	1	11.11%
Stolen Property Offenses	10	10	0	0.00%	10	10	0	0.00%
Forgery and Counterfeiting	9	1	8	800.00%	9	1	8	800.00%
Disorderly Conduct	8	5	3	60.00%	8	5	3	60.00%
Sex Offenses	4	5	-1	-20.00%	4	5	-1	-20.00%
Alcohol Offense	2	5	-3	-60.00%	2	5	-3	-60.00%
Kidnapping	2	2	0	0.00%	2	2	0	0.00%
Trespassing	2	6	-4	-66.67%	2	6	-4	-66.67%
Weapons Violations	1	1	0	0.00%	1	1	0	0.00%
Bribery	0	0	0	0.00%	0	0	0	0.00%
Embezzlement	0	0	0	0.00%	0	0	0	0.00%
Extortion	0	0	0	0.00%	0	0	0	0.00%
Family Offenses, Nonviolent	0	0	0	0.00%	0	0	0	0.00%
Gambling Offenses	0	0	0	0.00%	0	0	0	0.00%
Justifiable Homicide	0	0	0	0.00%	0	0	0	0.00%
Negligent Manslaughter	0	0	0	0.00%	0	0	0	0.00%
Pornography	0	0	0	0.00%	0	0	0	0.00%
Prostitution	0	0	0	0.00%	0	0	0	0.00%
Runaway	0	0	0	0.00%	0	0	0	0.00%
Vagrancy	0	0	0	0.00%	0	0	0	0.00%
<b>Grand Total</b>	<b>346</b>	<b>323</b>	<b>23</b>	<b>7.12%</b>	<b>346</b>	<b>323</b>	<b>23</b>	<b>7.12%</b>

Selected Criteria					
Date:	Dec 31, 2018	Period:	365	Tab:	QOL

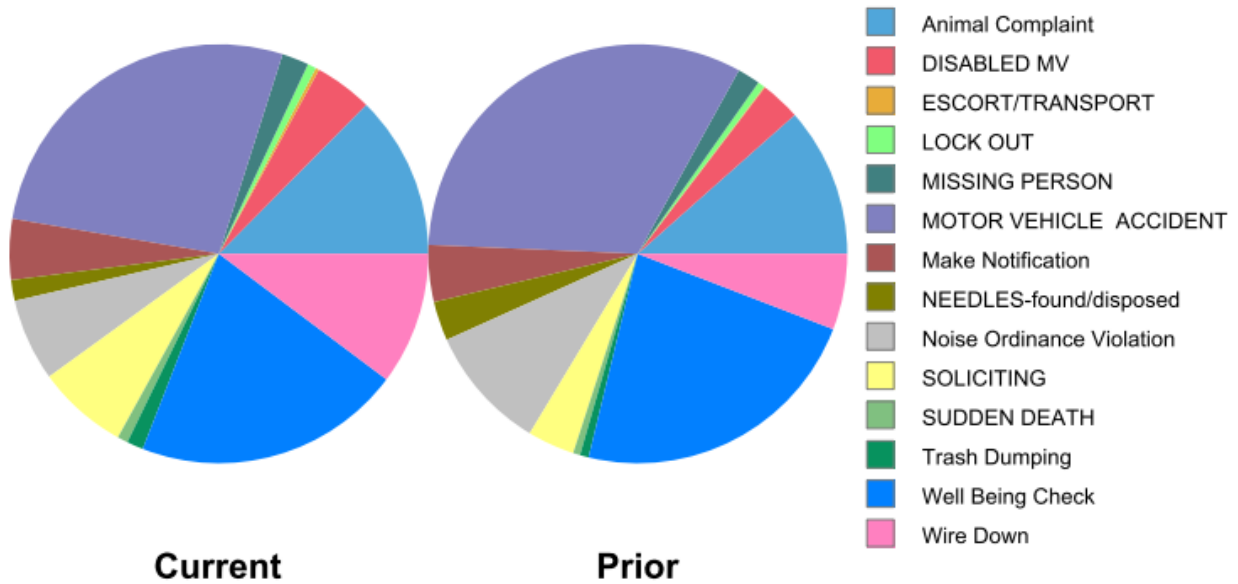
### Quality of Life



	Current	Prior	Delta	% Change	CYTD	PYTD	YTD Delta	% Change YTD
Suspicious Person/MV	418	481	-63	-13.10%	418	481	-63	-13.10%
Animal Call	188	171	17	9.94%	188	171	17	9.94%
Vandalism	165	178	-13	-7.30%	165	178	-13	-7.30%
Larceny	134	177	-43	-24.29%	134	177	-43	-24.29%
Simple Assault	80	77	3	3.90%	80	77	3	3.90%
Drug Violations	34	48	-14	-29.17%	34	48	-14	-29.17%
Traffic Function	31	33	-2	-6.06%	31	33	-2	-6.06%
Burglary	24	25	-1	-4.00%	24	25	-1	-4.00%
Abandoned Motor Vehicle	9	2	7	350.00%	9	2	7	350.00%
Disorderly Conduct	8	5	3	60.00%	8	5	3	60.00%
Robbery	4	5	-1	-20.00%	4	5	-1	-20.00%
Weapons Violation	1	1	0	0.00%	1	1	0	0.00%
Sex Offenses	0	0	0	0.00%	0	0	0	0.00%
Suspicious Person	0	0	0	0.00%	0	0	0	0.00%
Grand Total	1096	1203	-107	-8.89%	1096	1203	-107	-8.89%

Selected Criteria					
Date:	Dec 31, 2018	Period:	365	Tab:	SC

### Service Calls



	Current	Prior	Delta	% Change	CYTD	PYTD	YTD Delta	% Change YTD
Animal Complaint	188	171	17	9.94%	188	171	17	9.94%
DISABLED MV	67	46	21	45.65%	67	46	21	45.65%
ESCORT/ TRANSPORT	4	1	3	300.00%	4	1	3	300.00%
LOCK OUT	10	8	2	25.00%	10	8	2	25.00%
MISSING PERSON	31	26	5	19.23%	31	26	5	19.23%
MOTOR VEHICLE ACCIDENT	407	480	-73	-15.21%	407	480	-73	-15.21%
Make Notification	70	65	5	7.69%	70	65	5	7.69%
NEEDLES-found/ disposed	24	45	-21	-46.67%	24	45	-21	-46.67%
Noise Ordinance Violation	95	143	-48	-33.57%	95	143	-48	-33.57%
SOLICITING	105	54	51	94.44%	105	54	51	94.44%
SUDDEN DEATH	12	8	4	50.00%	12	8	4	50.00%
Trash Dumping	19	10	9	90.00%	19	10	9	90.00%
Well Being Check	309	340	-31	-9.12%	309	340	-31	-9.12%
Wire Down	153	87	66	75.86%	153	87	66	75.86%
Grand Total	1494	1484	10	0.67%	1494	1484	10	0.67%