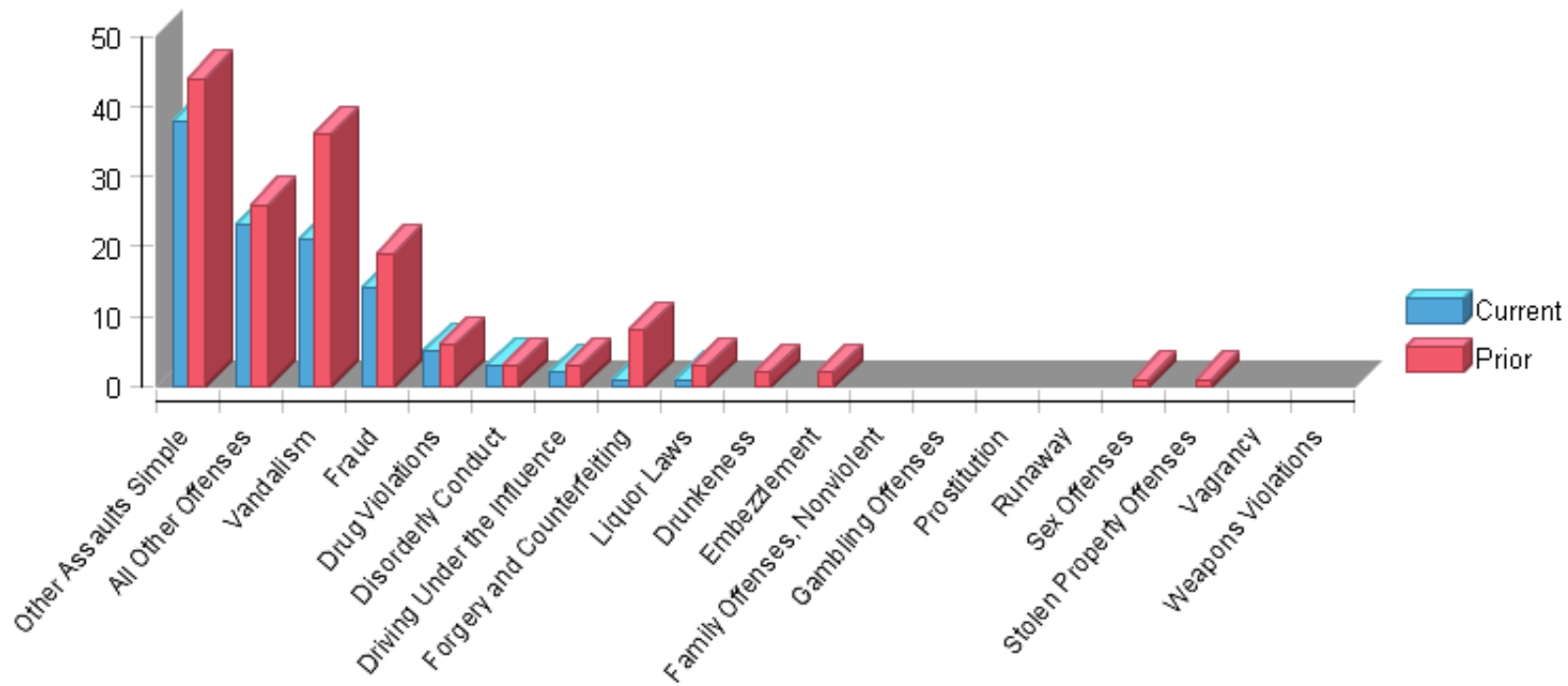


**Selected Criteria**

Date:	May 1, 2015	Period:	121	Tab:	Part2
-------	-------------	---------	-----	------	-------

**Part 2 Incidents**



	<b>Current</b>	<b>Prior</b>	<b>Delta</b>	<b>% Change</b>	<b>CYTD</b>	<b>PYTD</b>	<b>YTD Delta</b>	<b>% Change YTD</b>
<b>Other Assaults Simple</b>	38	44	-6	-13.64%	38	44	-6	-13.64%
<b>All Other Offenses</b>	23	26	-3	-11.54%	23	26	-3	-11.54%
<b>Vandalism</b>	21	36	-15	-41.67%	21	36	-15	-41.67%
<b>Fraud</b>	14	19	-5	-26.32%	14	19	-5	-26.32%
<b>Drug Violations</b>	5	6	-1	-16.67%	5	6	-1	-16.67%
<b>Disorderly Conduct</b>	3	3	0	0.00%	3	3	0	0.00%
<b>Driving Under the Influence</b>	2	3	-1	-33.33%	2	3	-1	-33.33%
<b>Forgery and Counterfeiting</b>	1	8	-7	-87.50%	1	8	-7	-87.50%
<b>Liquor Laws</b>	1	3	-2	-66.67%	1	3	-2	-66.67%
<b>Drunkeness</b>	0	2	-2	-100.00%	0	2	-2	-100.00%
<b>Embezzlement</b>	0	2	-2	-100.00%	0	2	-2	-100.00%
<b>Family Offenses, Nonviolent</b>	0	0	0	0.00%	0	0	0	0.00%
<b>Gambling Offenses</b>	0	0	0	0.00%	0	0	0	0.00%
<b>Prostitution</b>	0	0	0	0.00%	0	0	0	0.00%
<b>Runaway</b>	0	0	0	0.00%	0	0	0	0.00%
<b>Sex Offenses</b>	0	1	-1	-100.00%	0	1	-1	-100.00%
<b>Stolen Property Offenses</b>	0	1	-1	-100.00%	0	1	-1	-100.00%
<b>Vagrancy</b>	0	0	0	0.00%	0	0	0	0.00%
<b>Weapons Violations</b>	0	0	0	0.00%	0	0	0	0.00%
<b>Grand Total</b>	108	154	-46	-29.87%	108	154	-46	-29.87%