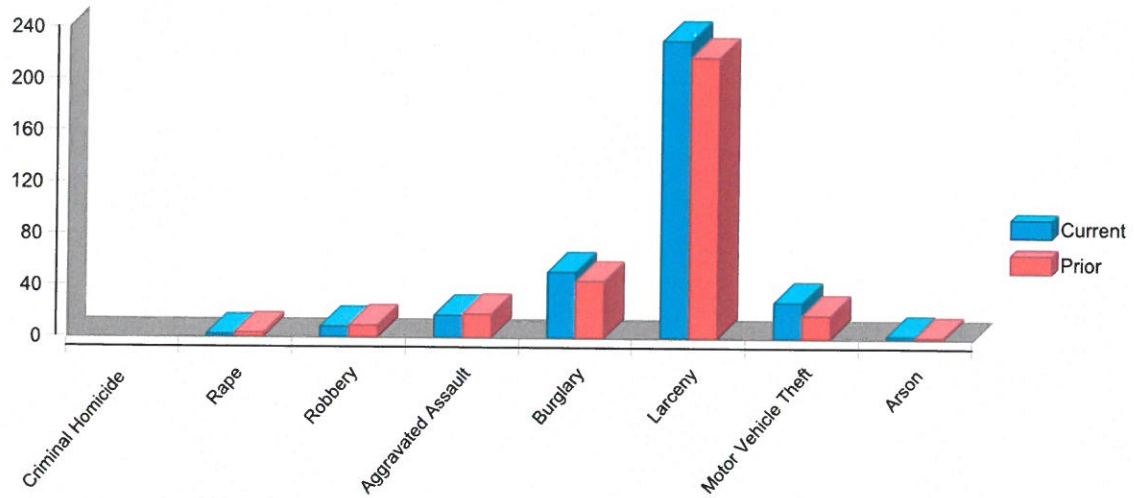


Selected Criteria					
Date:	Dec 31, 2015	Period:	365	Tab:	Part1

Property Crimes CYTD: 11.03%

Violent Crimes CYTD: -10.00%

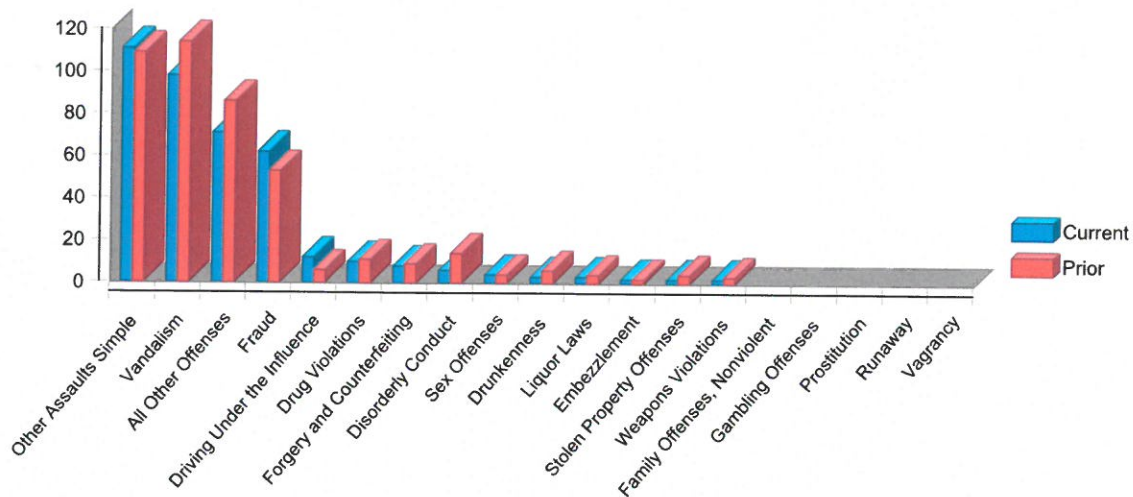
### Part 1 Incidents



	Current	Prior	Delta	% Change	CYTD	PYTD	YTD Delta	% Change YTD
Criminal Homicide	0	0	0	0.00%	0	0	0	0.00%
Rape	2	3	-1	-33.33%	2	3	-1	-33.33%
Robbery	8	9	-1	-11.11%	8	9	-1	-11.11%
Aggravated Assault	17	18	-1	-5.56%	17	18	-1	-5.56%
Burglary	51	44	7	15.91%	51	44	7	15.91%
Larceny	231	218	13	5.96%	231	218	13	5.96%
Motor Vehicle Theft	28	18	10	55.56%	28	18	10	55.56%
Arson	2	1	1	100.00%	2	1	1	100.00%
Grand Total	339	311	28	9.00%	339	311	28	9.00%

Selected Criteria					
Date:	Dec 31, 2015	Period:	365	Tab:	Part2

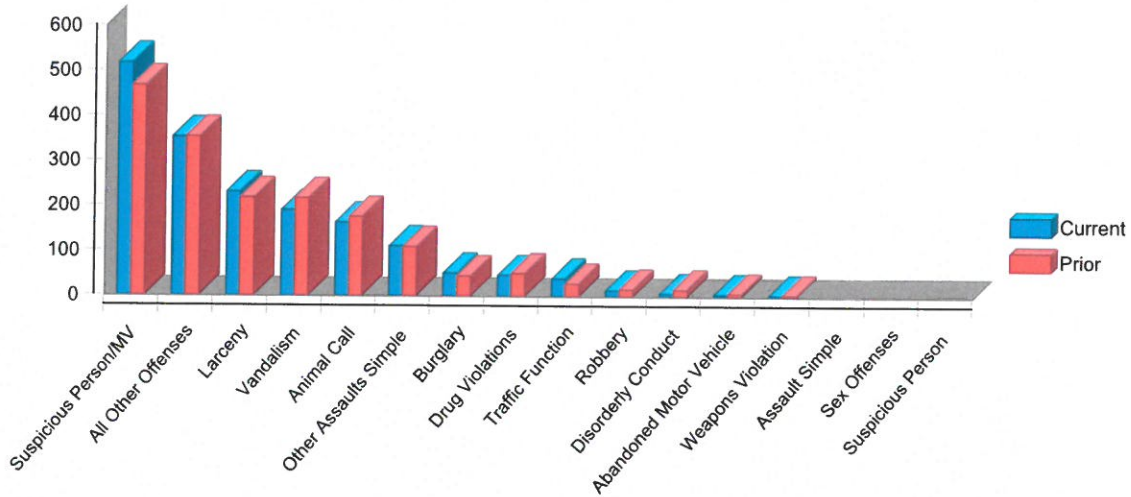
### Part 2 Incidents



	Current	Prior	Delta	% Change	CYTD	PYTD	YTD Delta	% Change YTD
Other Assaults Simple	111	109	2	1.83%	111	109	2	1.83%
Vandalism	98	114	-16	-14.04%	98	114	-16	-14.04%
All Other Offenses	71	86	-15	-17.44%	71	86	-15	-17.44%
Fraud	62	53	9	16.98%	62	53	9	16.98%
Driving Under the Influence	12	6	6	100.00%	12	6	6	100.00%
Drug Violations	10	11	-1	-9.09%	10	11	-1	-9.09%
Forgery and Counterfeiting	8	9	-1	-11.11%	8	9	-1	-11.11%
Disorderly Conduct	6	14	-8	-57.14%	6	14	-8	-57.14%
Sex Offenses	4	4	0	0.00%	4	4	0	0.00%
Drunkenness	3	6	-3	-50.00%	3	6	-3	-50.00%
Liquor Laws	3	4	-1	-25.00%	3	4	-1	-25.00%
Embezzlement	2	2	0	0.00%	2	2	0	0.00%
Stolen Property Offenses	2	4	-2	-50.00%	2	4	-2	-50.00%
Weapons Violations	2	3	-1	-33.33%	2	3	-1	-33.33%
Family Offenses, Nonviolent	0	0	0	0.00%	0	0	0	0.00%
Gambling Offenses	0	0	0	0.00%	0	0	0	0.00%
Prostitution	0	0	0	0.00%	0	0	0	0.00%
Runaway	0	0	0	0.00%	0	0	0	0.00%
Vagrancy	0	0	0	0.00%	0	0	0	0.00%
<b>Grand Total</b>	<b>394</b>	<b>425</b>	<b>-31</b>	<b>-7.29%</b>	<b>394</b>	<b>425</b>	<b>-31</b>	<b>-7.29%</b>

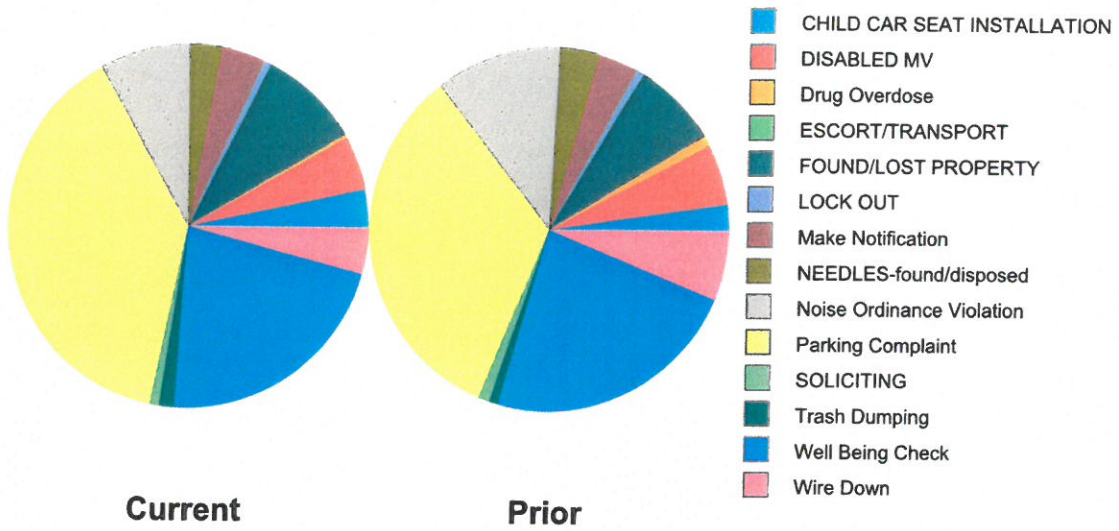
Selected Criteria					
Date:	Dec 31, 2015	Period:	365	Tab:	QOL

### Quality of Life



	Current	Prior	Delta	% Change	CYTD	PYTD	YTD Delta	% Change YTD
Suspicious Person/MV	517	467	50	10.71%	517	467	50	10.71%
All Other Offenses	353	354	-1	-0.28%	353	354	-1	-0.28%
Larceny	231	218	13	5.96%	231	218	13	5.96%
Vandalism	190	217	-27	-12.44%	190	217	-27	-12.44%
Animal Call	163	176	-13	-7.39%	163	176	-13	-7.39%
Other Assaults Simple	111	109	2	1.83%	111	109	2	1.83%
Burglary	51	44	7	15.91%	51	44	7	15.91%
Drug Violations	46	50	-4	-8.00%	46	50	-4	-8.00%
Traffic Function	39	28	11	39.29%	39	28	11	39.29%
Robbery	13	15	-2	-13.33%	13	15	-2	-13.33%
Disorderly Conduct	6	14	-8	-57.14%	6	14	-8	-57.14%
Abandoned Motor Vehicle	4	6	-2	-33.33%	4	6	-2	-33.33%
Weapons Violation	2	3	-1	-33.33%	2	3	-1	-33.33%
Assault Simple	0	0	0	0.00%	0	0	0	0.00%
Sex Offenses	0	0	0	0.00%	0	0	0	0.00%
Suspicious Person	0	0	0	0.00%	0	0	0	0.00%
	0	0	0	0.00%	0	0	0	0.00%
Grand Total	1726	1701	25	1.47%	1726	1701	25	1.47%

## Service Calls



	Current	Prior	Delta	% Change	CYTD	PYTD	YTD Delta	% Change YTD
CHILD CAR SEAT INSTALLATION	42	26	16	61.54%	42	26	16	61.54%
DISABLED MV	59	59	0	0.00%	59	59	0	0.00%
Drug Overdose	3	10	-7	-70.00%	3	10	-7	-70.00%
ESCORT/TRANSPORT	1	0	1	100.00%	1	0	1	100.00%
FOUND/LOST PROPERTY	111	84	27	32.14%	111	84	27	32.14%
LOCK OUT	8	7	1	14.29%	8	7	1	14.29%
Make Notification	48	39	9	23.08%	48	39	9	23.08%
NEEDLES-found/disposed	36	39	-3	-7.69%	36	39	-3	-7.69%
Noise Ordinance Violation	99	124	-25	-20.16%	99	124	-25	-20.16%
Parking Complaint	473	360	113	31.39%	473	360	113	31.39%
SOLICITING	10	11	-1	-9.09%	10	11	-1	-9.09%
Trash Dumping	17	9	8	88.89%	17	9	8	88.89%
Well Being Check	268	252	16	6.35%	268	252	16	6.35%
Wire Down	50	67	-17	-25.37%	50	67	-17	-25.37%
Grand Total	1225	1087	138	12.70%	1225	1087	138	12.70%