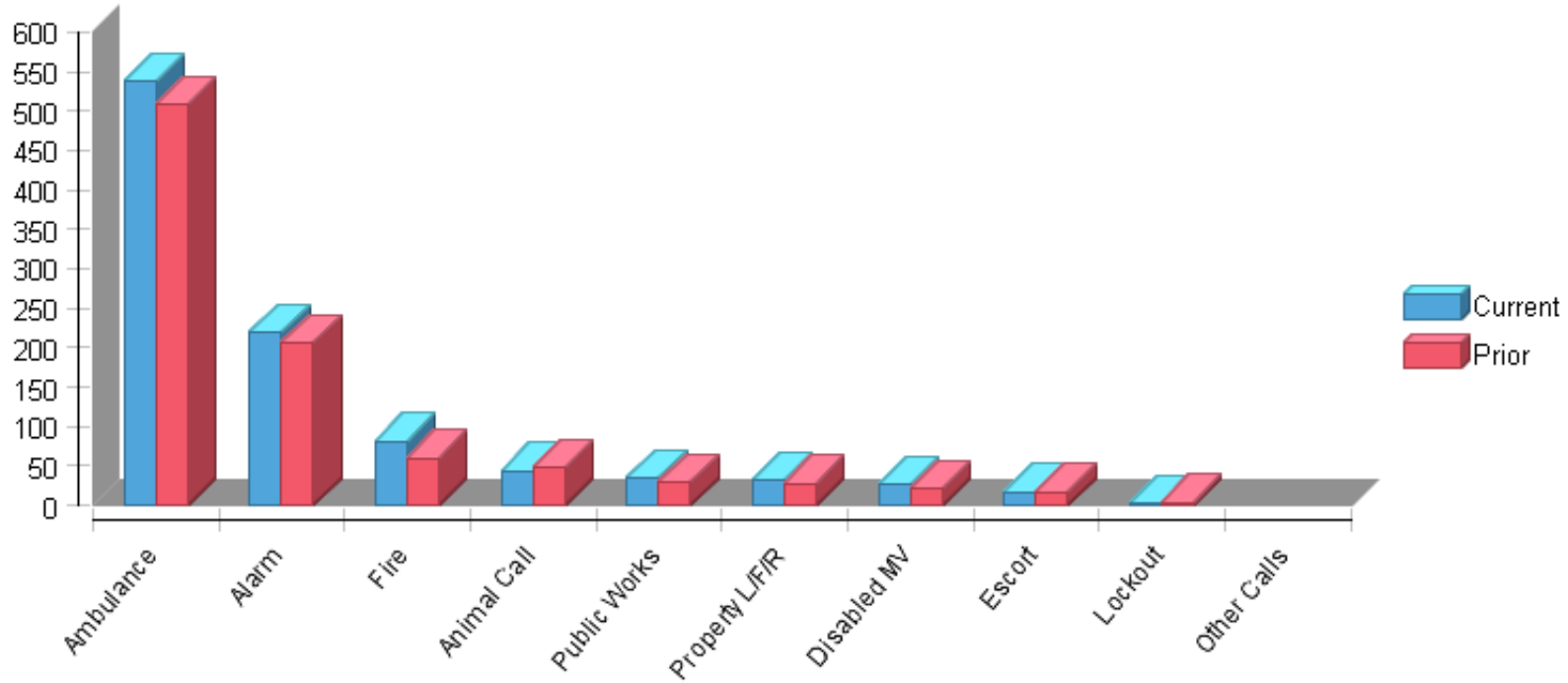


### Selected Criteria

Date:	May 1, 2015	Period:	121	Tab:	SC
-------	-------------	---------	-----	------	----

### Service Calls



	<b>Current</b>	<b>Prior</b>	<b>Delta</b>	<b>% Change</b>	<b>CYTD</b>	<b>PYTD</b>	<b>YTD Delta</b>	<b>% Change YTD</b>
<b>Ambulance</b>	537	509	28	5.50%	537	509	28	5.50%
<b>Alarm</b>	219	206	13	6.31%	219	206	13	6.31%
<b>Fire</b>	81	60	21	35.00%	81	60	21	35.00%
<b>Animal Call</b>	44	48	-4	-8.33%	44	48	-4	-8.33%
<b>Public Works</b>	35	30	5	16.67%	35	30	5	16.67%
<b>Property L/F/R</b>	32	28	4	14.29%	32	28	4	14.29%
<b>Disabled MV</b>	26	21	5	23.81%	26	21	5	23.81%
<b>Escort</b>	17	17	0	0.00%	17	17	0	0.00%
<b>Lockout</b>	2	4	-2	-50.00%	2	4	-2	-50.00%
<b>Other Calls</b>	0	0	0	0.00%	0	0	0	0.00%
<b>Grand Total</b>	993	923	70	7.58%	993	923	70	7.58%