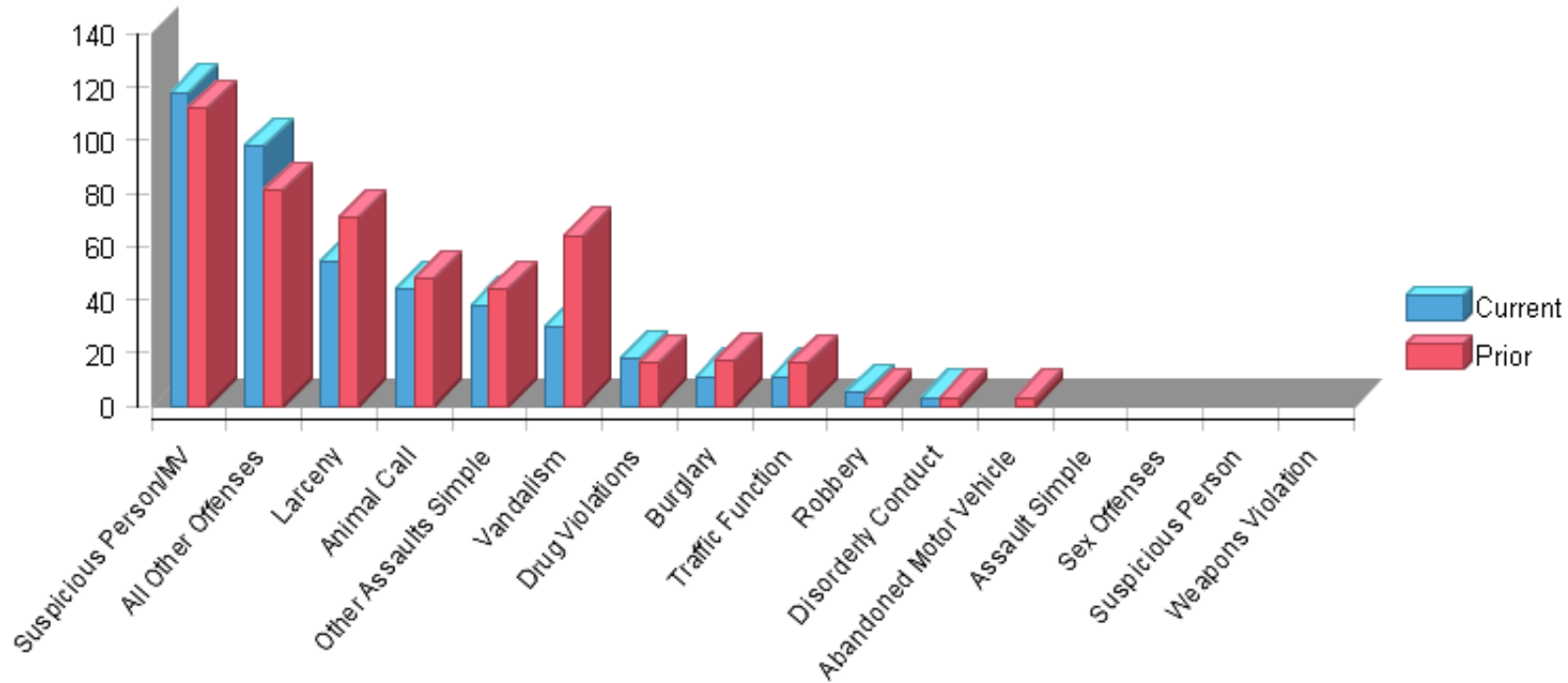


Selected Criteria

Date:	May 1, 2015	Period:	121	Tab:	QOL
-------	-------------	---------	-----	------	-----

Quality of Life



	Current	Prior	Delta	% Change	CYTD	PYTD	YTD Delta	% Change YTD
Suspicious Person/MV	118	112	6	5.36%	118	112	6	5.36%
All Other Offenses	98	81	17	20.99%	98	81	17	20.99%
Larceny	54	71	-17	-23.94%	54	71	-17	-23.94%
Animal Call	44	48	-4	-8.33%	44	48	-4	-8.33%
Other Assaults Simple	38	44	-6	-13.64%	38	44	-6	-13.64%
Vandalism	30	64	-34	-53.13%	30	64	-34	-53.13%
Drug Violations	18	16	2	12.50%	18	16	2	12.50%
Burglary	11	17	-6	-35.29%	11	17	-6	-35.29%
Traffic Function	11	16	-5	-31.25%	11	16	-5	-31.25%
Robbery	5	3	2	66.67%	5	3	2	66.67%
Disorderly Conduct	3	3	0	0.00%	3	3	0	0.00%
Abandoned Motor Vehicle	0	3	-3	-100.00%	0	3	-3	-100.00%
Assault Simple	0	0	0	0.00%	0	0	0	0.00%
Sex Offenses	0	0	0	0.00%	0	0	0	0.00%
Suspicious Person	0	0	0	0.00%	0	0	0	0.00%
Weapons Violation	0	0	0	0.00%	0	0	0	0.00%
	0	0	0	0.00%	0	0	0	0.00%
Grand Total	430	478	-48	-10.04%	430	478	-48	-10.04%