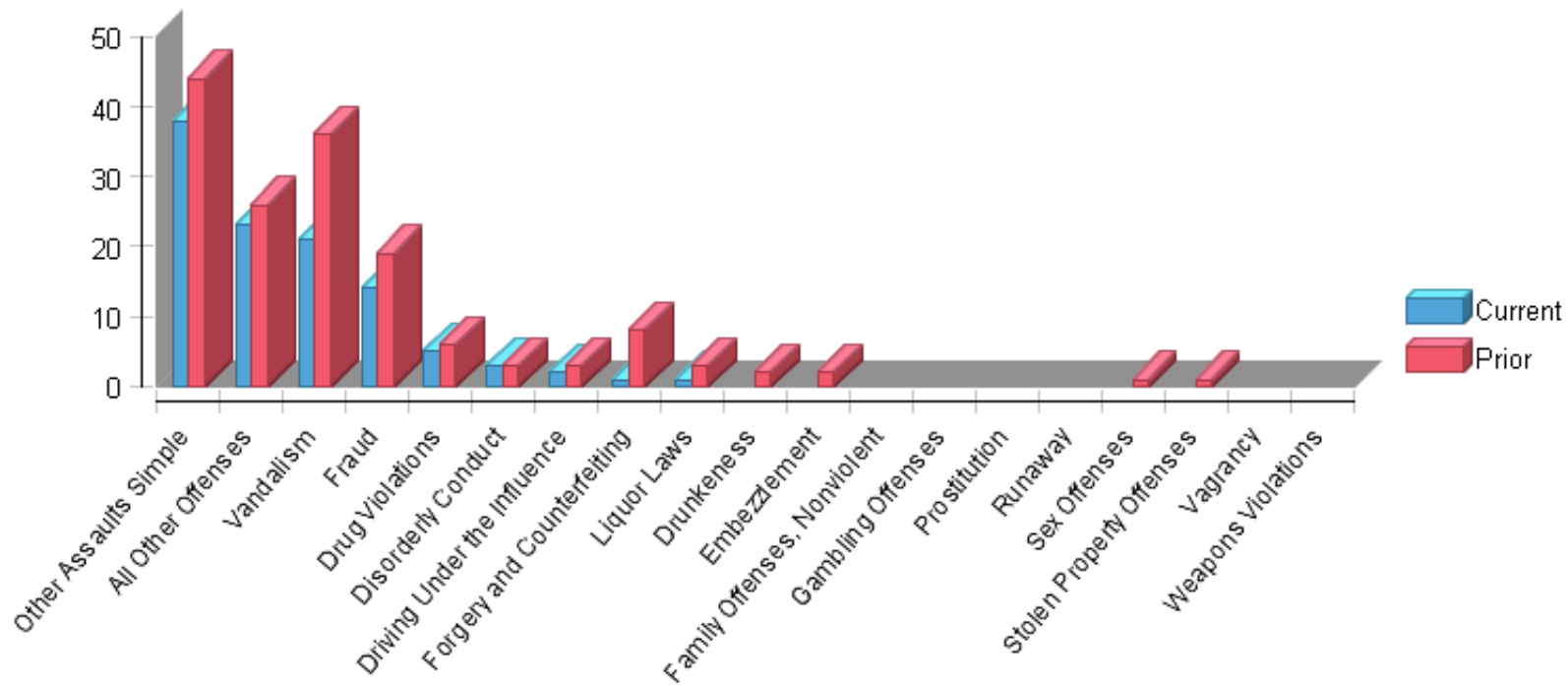


Selected Criteria

Date:	May 1, 2015	Period:	121	Tab:	Part2
-------	-------------	---------	-----	------	-------

Part 2 Incidents



	Current	Prior	Delta	% Change	CYTD	PYTD	YTD Delta	% Change YTD
Other Assaults Simple	38	44	-6	-13.64%	38	44	-6	-13.64%
All Other Offenses	23	26	-3	-11.54%	23	26	-3	-11.54%
Vandalism	21	36	-15	-41.67%	21	36	-15	-41.67%
Fraud	14	19	-5	-26.32%	14	19	-5	-26.32%
Drug Violations	5	6	-1	-16.67%	5	6	-1	-16.67%
Disorderly Conduct	3	3	0	0.00%	3	3	0	0.00%
Driving Under the Influence	2	3	-1	-33.33%	2	3	-1	-33.33%
Forgery and Counterfeiting	1	8	-7	-87.50%	1	8	-7	-87.50%
Liquor Laws	1	3	-2	-66.67%	1	3	-2	-66.67%
Drunkeness	0	2	-2	-100.00%	0	2	-2	-100.00%
Embezzlement	0	2	-2	-100.00%	0	2	-2	-100.00%
Family Offenses, Nonviolent	0	0	0	0.00%	0	0	0	0.00%
Gambling Offenses	0	0	0	0.00%	0	0	0	0.00%
Prostitution	0	0	0	0.00%	0	0	0	0.00%
Runaway	0	0	0	0.00%	0	0	0	0.00%
Sex Offenses	0	1	-1	-100.00%	0	1	-1	-100.00%
Stolen Property Offenses	0	1	-1	-100.00%	0	1	-1	-100.00%
Vagrancy	0	0	0	0.00%	0	0	0	0.00%
Weapons Violations	0	0	0	0.00%	0	0	0	0.00%
Grand Total	108	154	-46	-29.87%	108	154	-46	-29.87%