

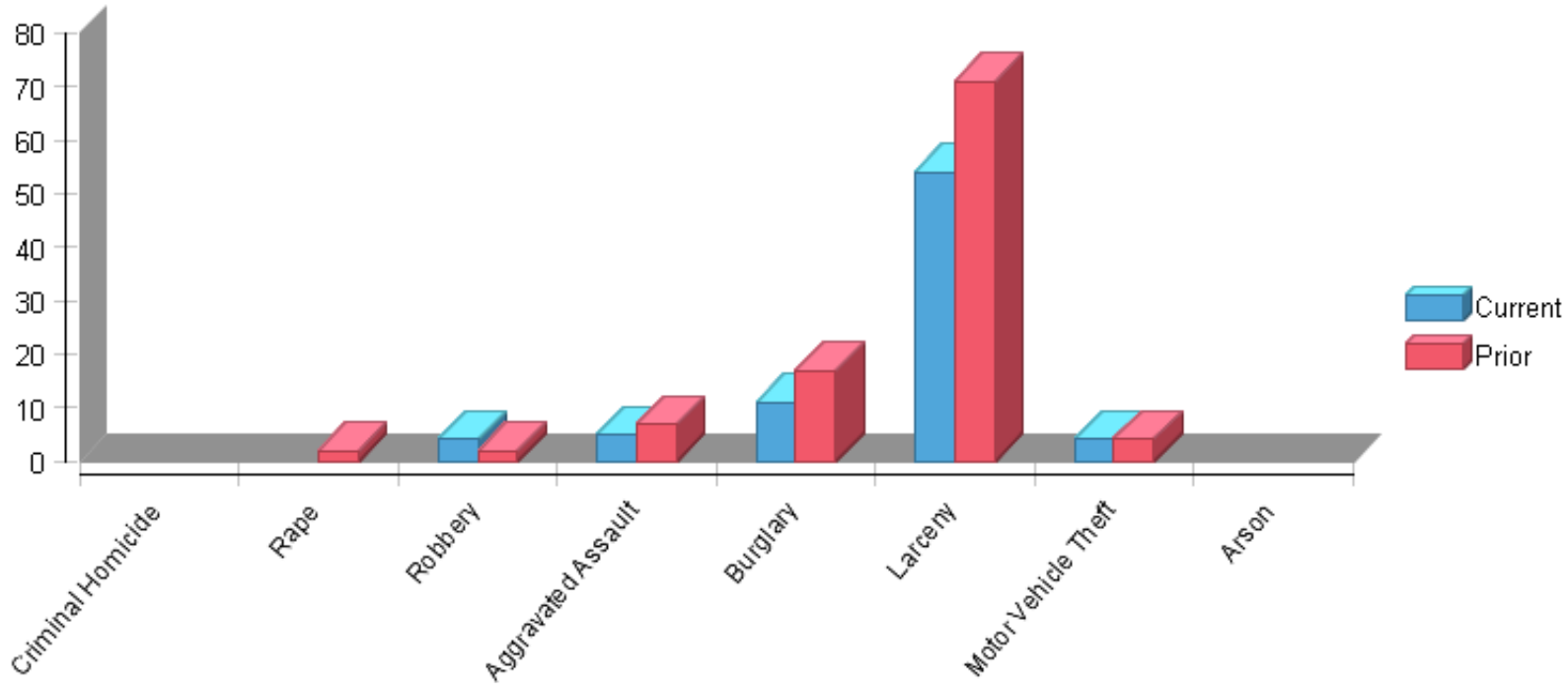
**Selected Criteria**

Date:	May 1, 2015	Period:	121	Tab:	Part1
-------	-------------	---------	-----	------	-------

**Property Crimes CYTD: -25.00%**

**Violent Crimes CYTD: -18.18%**

**Part 1 Incidents**



	<b>Current</b>	<b>Prior</b>	<b>Delta</b>	<b>% Change</b>	<b>CYTD</b>	<b>PYTD</b>	<b>YTD Delta</b>	<b>% Change YTD</b>
<b>Criminal Homicide</b>	0	0	0	0.00%	0	0	0	0.00%
<b>Rape</b>	0	2	-2	-100.00%	0	2	-2	-100.00%
<b>Robbery</b>	4	2	2	100.00%	4	2	2	100.00%
<b>Aggravated Assault</b>	5	7	-2	-28.57%	5	7	-2	-28.57%
<b>Burglary</b>	11	17	-6	-35.29%	11	17	-6	-35.29%
<b>Larceny</b>	54	71	-17	-23.94%	54	71	-17	-23.94%
<b>Motor Vehicle Theft</b>	4	4	0	0.00%	4	4	0	0.00%
<b>Arson</b>	0	0	0	0.00%	0	0	0	0.00%
<b>Grand Total</b>	78	103	-25	-24.27%	78	103	-25	-24.27%